

Para Obtener esta información en Español favor de habra este eslabón:
www.discoveryacademy.org/enrollflyer_sp.pdf

Pou kreyòl ayisyen, cliquez ici: www.discoveryacademy.org/enrollflyer_ha.pdf

DISCOVERY ACADEMY OF LAKE ALFRED

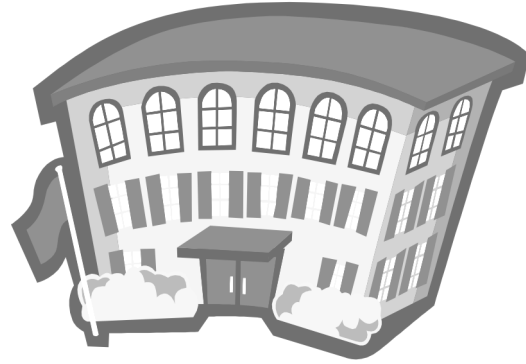
1000 North Buena Vista Drive, Lake Alfred, FL 33850
Telephone 863-295-5955 Fax 863-295-5978

OPEN
ENROLLMENT

FOR THE

2012 - 2013

SCHOOL YEAR



Accepting applications:

8:00 a.m. Monday, January 9, 2012
through
5:00 p.m. Tuesday, January 24, 2012

Enrollment open to:

- ◆ All 5th grade students in Polk County who are interested in attending DALA.
- ◆ All incoming 6th, 7th and 8th graders in Polk County who are not currently attending DALA.
 - ◆ Any student currently attending DALA will not need to apply unless they are retained.
 - ◆ Students who are currently on the Discovery Academy waiting list for the 2011-2012 school year **MUST** reapply to be added to the waiting list for the 2012-2013 school year.

Applications will be **available on January 9th, 2012** at the following locations: Discovery Academy main office, nearby elementary schools and the Discovery Academy website at <http://www.discoveryacademy.org/Application.html>.

Transportation is NOT provided to all areas of the county. It is possible that you will have to transport your child to and from school. If you need more information, please call the school at 863-295-5955.